

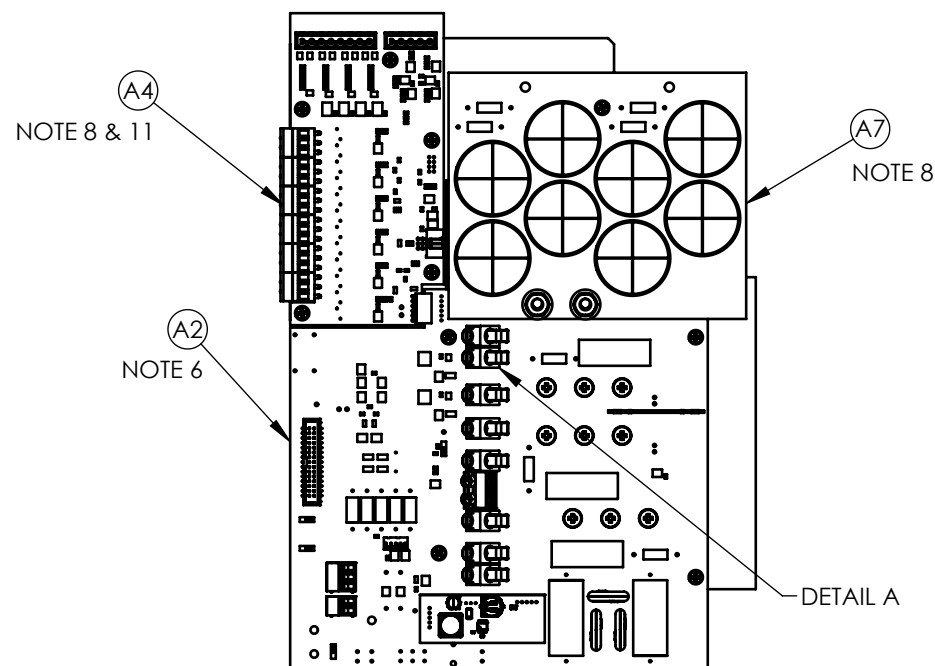
**REPLACEMENT KIT**

**PART NUMBERS:**

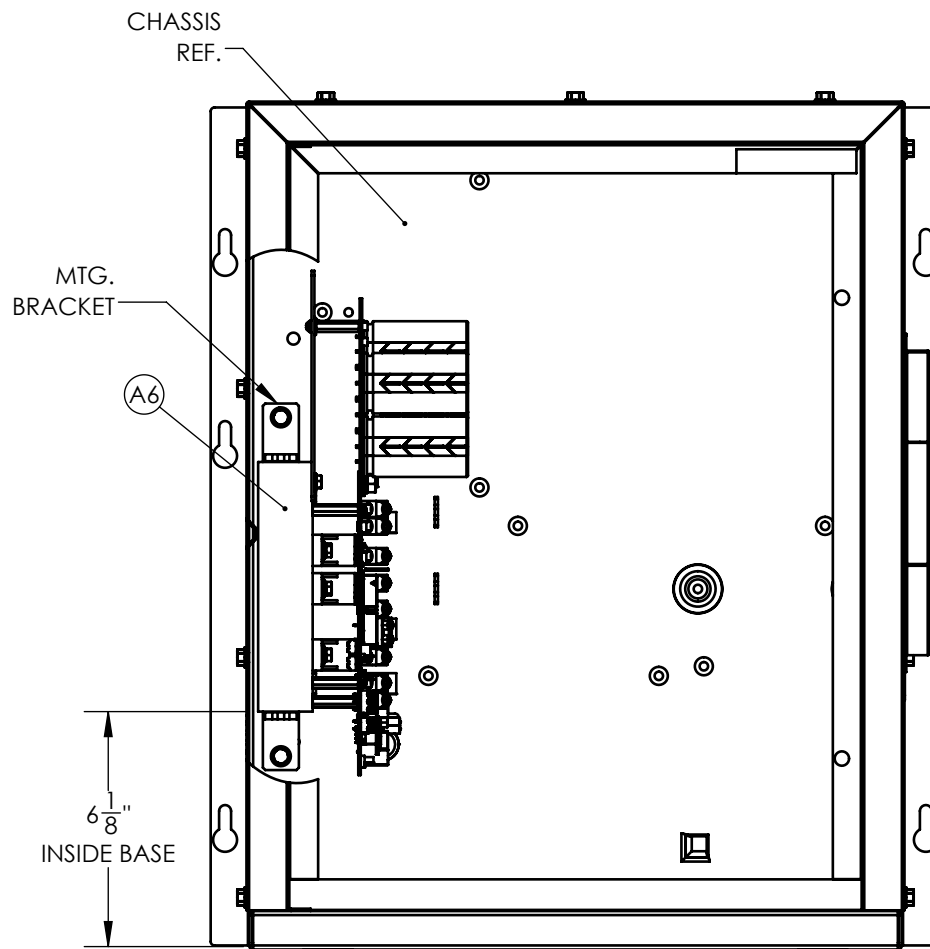
- EJ5332-12.
- EJ5332-13.
- EJ5332-14.
- EJ5332-22.
- EJ5332-23.
- EJ5332-24.

**TOOLS NEEDED:**

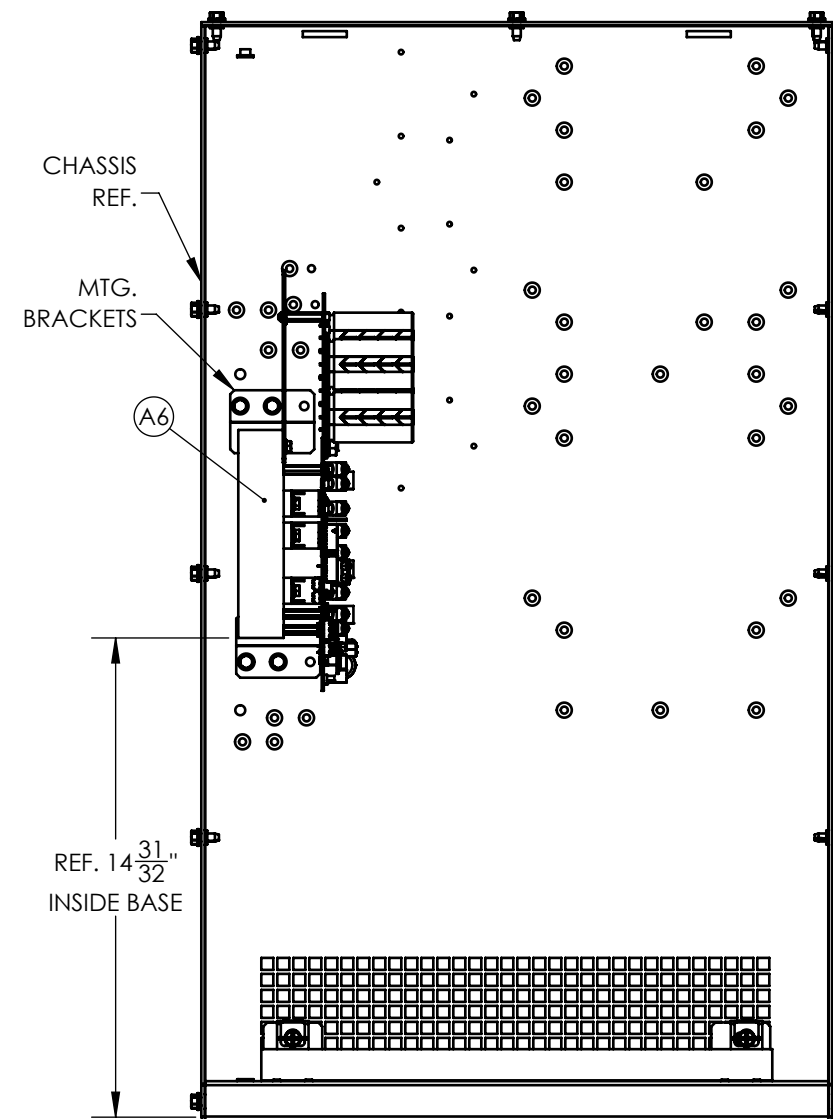
- PHILIPS HEAD SCREW DRIVER
- FLAT HEAD SCREW DRIVER
- 3/8 SOCKET WRENCH
- 8mm WRENCH (IF REMOVING (A4))



**A6 RECTIFIER ASSY.**

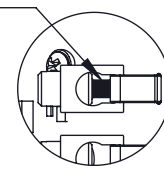


**MOUNTING IN STYLE-5054  
FRONT VIEW  
SCALE 1:5**



**MOUNTING IN STYLE-5070  
FRONT VIEW  
SCALE 1:6**

MAGNETICS WIRE CROSS SECTION  
(MUST SIT SQUARE IN LUGS)



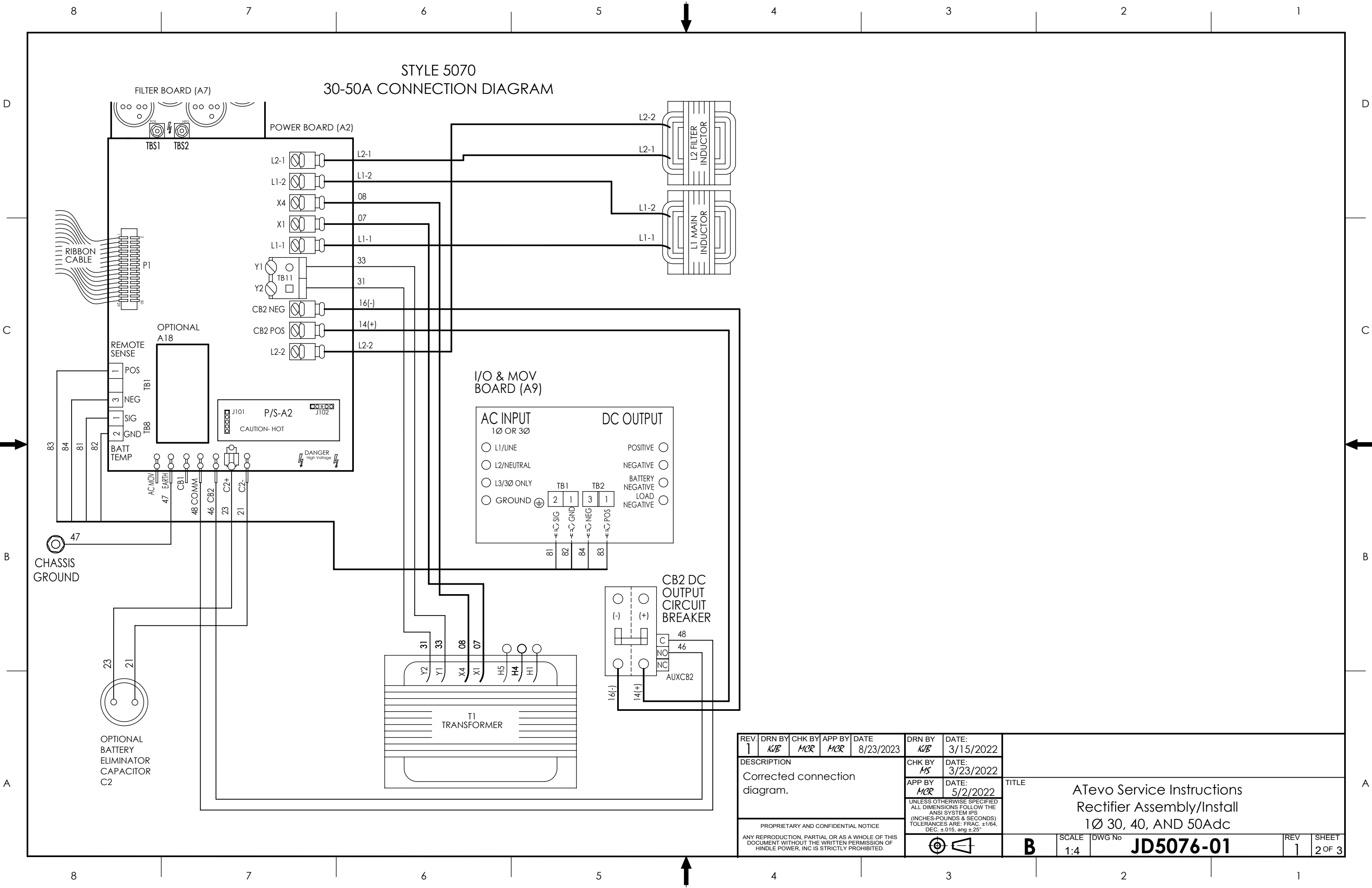
**DETAIL A  
VIEW OF A2 MAGNETICS  
WIRE COMPRESSION LUG**

**INSTRUCTIONS:**

1. TURN OFF (OPEN) AC INPUT CIRCUIT BREAKER (CB1), AND DC OUTPUT CIRCUIT BREAKER (CB2).
2. ALLOW INTERNAL VOLTAGES TO DISSIPATE.
3. OPEN DOOR PANEL AND CAREFULLY REMOVE PLEXIGLASS SHIELDS.
4. USING A VOLTMETER, VERIFY ALL POTENTIAL VOLTAGES ARE AT "0" ON LINE SIDE OF DC BREAKER.
5. LOCATE (A6) RECTIFIER ON LEFT SIDE OF ATEVO AS SHOWN IN ATEVO MOUNTING VIEWS.
6. DISCONNECT ALL LEADS.
7. REMOVE 1/4"-20 HARDWARE FROM MOUNTING BRACKETS THAT HOLD RECTIFIER ASSEMBLY TO CHASSIS.
8. LIFT (A6) RECTIFIER OUT OF ENCLOSURE. REMOVE (A7) CAP BOARD AND OPTIONAL (A4) BOARD, AND INSTALL THEM ON NEW POWER BOARD USING EXISTING HARDWARE.
9. IDENTIFY ENCLOSURE THEN INSTALL REPLACEMENT RECTIFIER ASSEMBLY USING DIMENSIONS PROVIDED.
10. USE 1/4"-20 HARDWARE & MOUNTING BRACKETS TO FASTEN REPLACEMENT (A6) RECTIFIER TO CHASSIS SHEET METAL.
11. REFER TO CONNECTION DIAGRAM (SHEET 2 OF 3 FOR A STYLE 5070, AND 3 OF 3 FOR A STYLE 5054), AND REATTACH LEADS TO (A2) POWER BOARD.
12. 35.4 INCH-POUNDS OF TORQUE IS NEEDED TO TIGHTEN MAGNETICS WIRE IN COMPRESSION LUGS OF (A2).

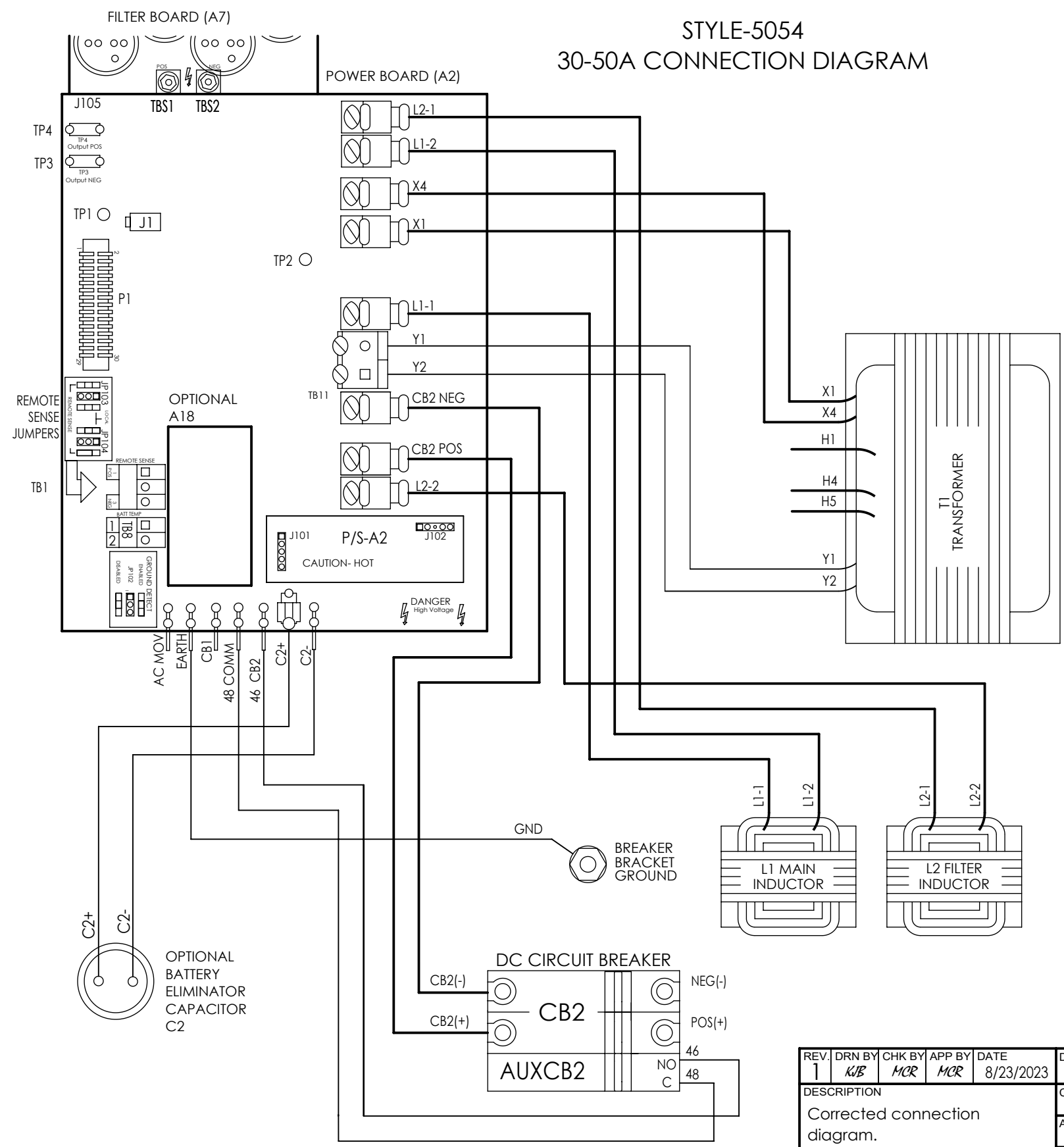
REV. 1	DRN BY KJB	CHK BY MCR	APP BY MCR	DATE 8/23/2023	DRN BY KJB	DATE: 3/15/2022	TITLE ATEvo Service Instructions Rectifier Assembly/Install 1Ø 30, 40, AND 50A <sub>dc</sub>	SCALE 1:4	DWG No <b>JD5076-01</b>	REV 1	SHEET 1 OF 3
DESCRIPTION Corrected connection diagram.					CHK BY MS	DATE: 3/23/2022					
UNLESS OTHERWISE SPECIFIED ALL DIMENSIONS FOLLOW THE ANSI SYSTEM IPS (INCHES-POUNDS & SECONDS) TOLERANCES ARE: FRAC. ±1/64, DEC. ±0.15, ANG ±.25°					APP BY MCR		DATE: 5/2/2022				
PROPRIETARY AND CONFIDENTIAL NOTICE ANY REPRODUCTION, PARTIAL OR AS A WHOLE OF THIS DOCUMENT WITHOUT THE WRITTEN PERMISSION OF HINDLE POWER, INC IS STRICTLY PROHIBITED.											

# STYLE 5070 30-50A CONNECTION DIAGRAM



REV. 1	DRN BY <i>KJB</i>	CHK BY <i>MCR</i>	APP BY <i>MCR</i>	DATE 8/23/2023	DRN BY <i>KJB</i>	DATE: 3/15/2022	TITLE Atevo Service Instructions Rectifier Assembly/Install 1Ø 30, 40, AND 50A <sub>dc</sub>
DESCRIPTION Corrected connection diagram.				CHK BY <i>MS</i>	DATE: 3/23/2022	UNLESS OTHERWISE SPECIFIED ALL DIMENSIONS FOLLOW THE ANSI SYSTEM IPS (INCHES-POUNDS & SECONDS) TOLERANCES ARE: FRAC. ±1/64, DEC. ±.015, ANG ±.25°	
PROPRIETARY AND CONFIDENTIAL NOTICE ANY REPRODUCTION, PARTIAL OR AS A WHOLE OF THIS DOCUMENT WITHOUT THE WRITTEN PERMISSION OF HINDLE POWER, INC IS STRICTLY PROHIBITED.				APP BY <i>MCR</i>	DATE: 5/2/2022		
						REV 1	SHEET 2 OF 3

# STYLE-5054 30-50A CONNECTION DIAGRAM



REV. 1	DRN BY <i>KJB</i>	CHK BY <i>MCR</i>	APP BY <i>MCR</i>	DATE 8/23/2023	DRN BY <i>KJB</i>	DATE: 3/15/2022	TITLE Atevo Service Instructions Rectifier Assembly/Install 1Ø 30, 40, AND 50A <sub>dc</sub>	
DESCRIPTION Corrected connection diagram.				CHK BY <i>MS</i>	DATE: 3/23/2022			
PROPRIETARY AND CONFIDENTIAL NOTICE ANY REPRODUCTION, PARTIAL OR AS A WHOLE OF THIS DOCUMENT WITHOUT THE WRITTEN PERMISSION OF HINDLE POWER, INC IS STRICTLY PROHIBITED.				APP BY <i>MCR</i>	DATE: 5/2/2022			
UNLESS OTHERWISE SPECIFIED ALL DIMENSIONS FOLLOW THE ANSI SYSTEM IPS (INCHES-POUNDS & SECONDS) TOLERANCES ARE: FRAC. ±1/64, DEC. ±.015, ANG ±.25°						SCALE 1:4	DWG No <b>JD5076-01</b>	
							REV 1	SHEET 3 OF 3