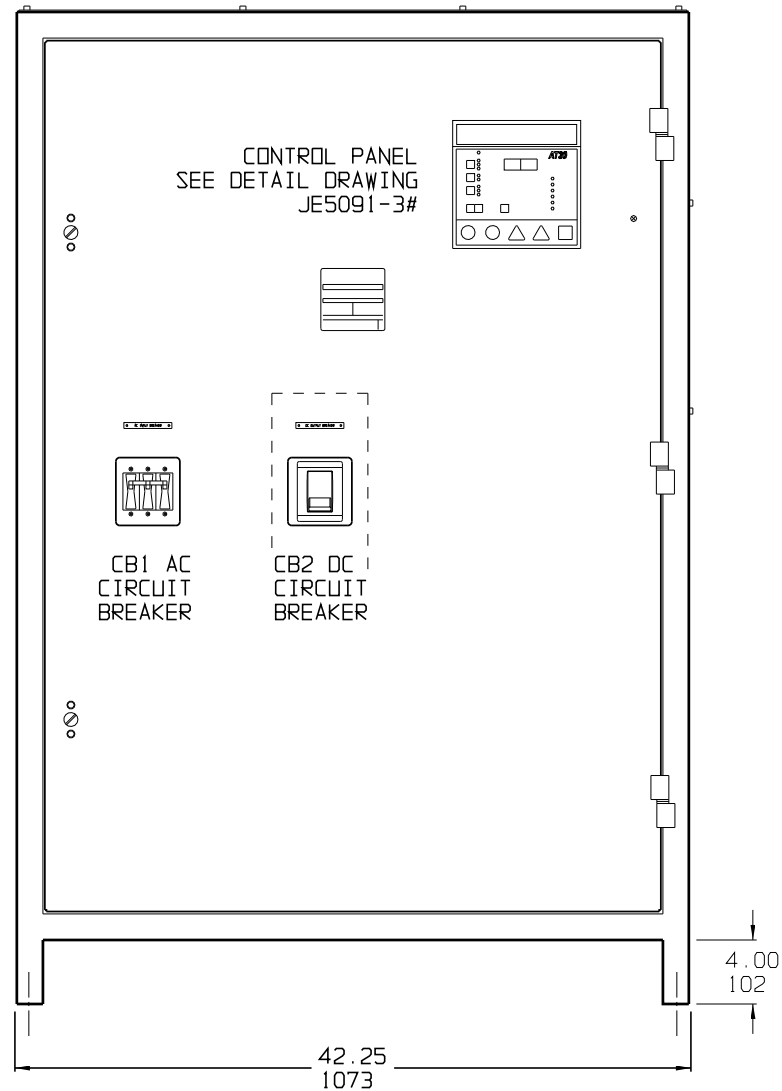
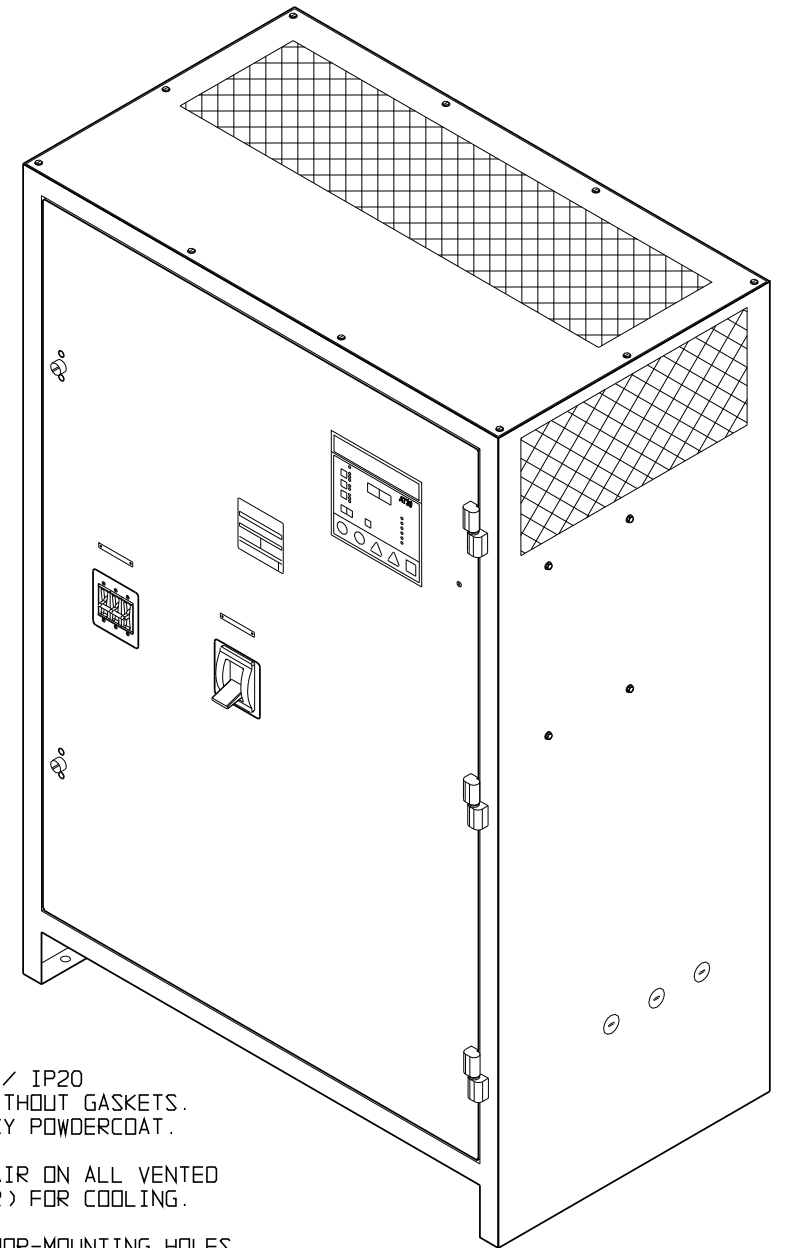
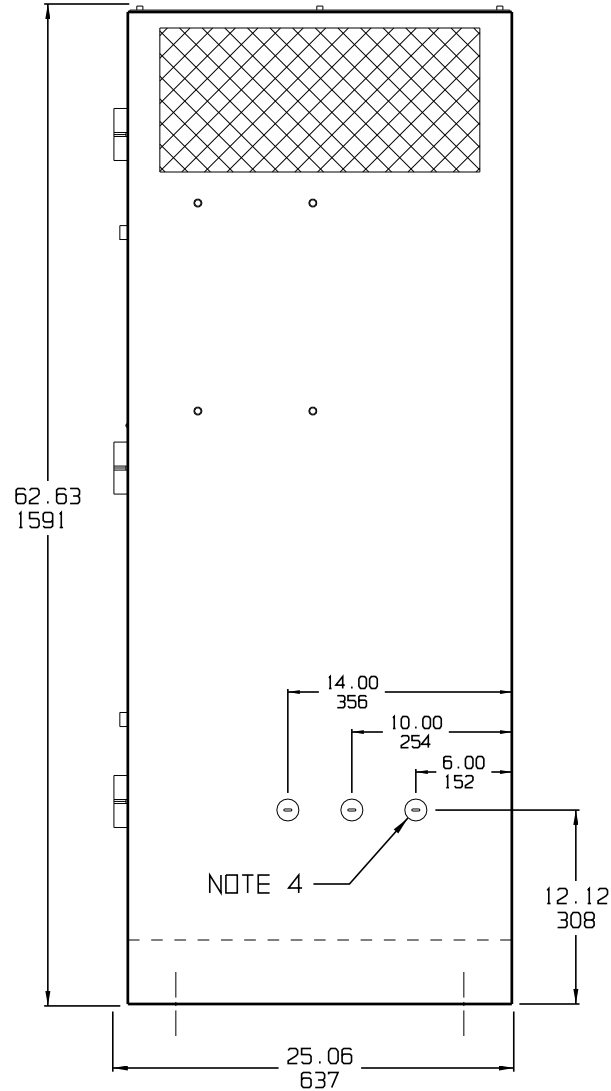


FRONT VIEW



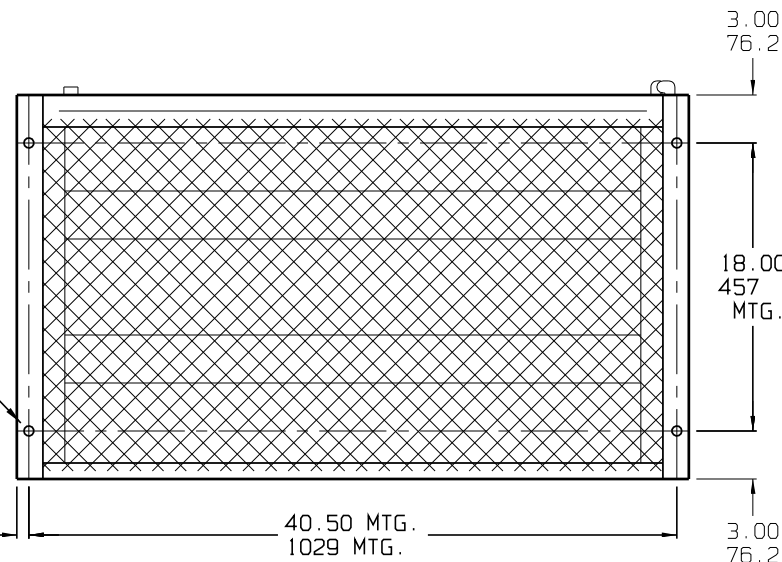
SIDE VIEW



NOTES:

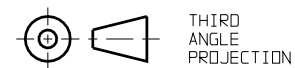
- 1) ENCLOSURE IS A NEMA TYPE 1 / IP20 TOP-VENTED STEEL CABINET WITHOUT GASKETS. FINISH IS ANSI-61 GRAY EPOXY POWDERCOAT.
- 2) ALLOW 6in / 152mm OF FREE AIR ON ALL VENTED SURFACES (TOP, SIDES & REAR) FOR COOLING.
- 3) FOUR (4) 0.625in / 16mm FLOOR-MOUNTING HOLES ARE PROVIDED ON BOTTOM OF ENCLOSURE AS SHOWN.
- 4) SIX (6) 1.31in / 33mm DIA STANDARD PRE-FAB CONDUIT KNOCKOUTS ARE PROVIDED AS SHOWN FOR 1in / 25mm CABLE ENTRY. BOTTOM CONDUIT ENTRY IS POSSIBLE THROUGH EXPANDED METAL UNDERSIDE. IF ADDITIONAL CONDUIT ENTRANCES ARE REQUIRED, ENCLOSURE SHOULD BE FIELD-MODIFIED BY INSTALLER.
- 5) BATTERY CHARGER SHIPPING WEIGHT: APPROXIMATELY 1100-1580 lb / 499-717 kg (see Product Literature)

NOTE 3



BOTTOM VIEW

DUAL DIMENSIONS in mm



THIRD ANGLE PROJECTION

2	-N/A-	082221	DRAWN BY MCR	092506	TITLE AT30 BATTERY CHARGER OUTLINE: NEMA-1 STYLE-163 ENCLOSURE		
1	23261	071412	ELECTRONIC APPROVAL SIGNATURES MAINTAINED BY MFG ECN LOG		DRAWING No JE5095-00		
0	20343	092506	UNLESS OTHERWISE NOTED DIMENSIONS ARE IN INCHES. TOLERANCES ARE:		REV 2	B	
REV	ECN No	DATE	SCALE NTS	PART No JE5095-00	SHEET 1	OF 1	