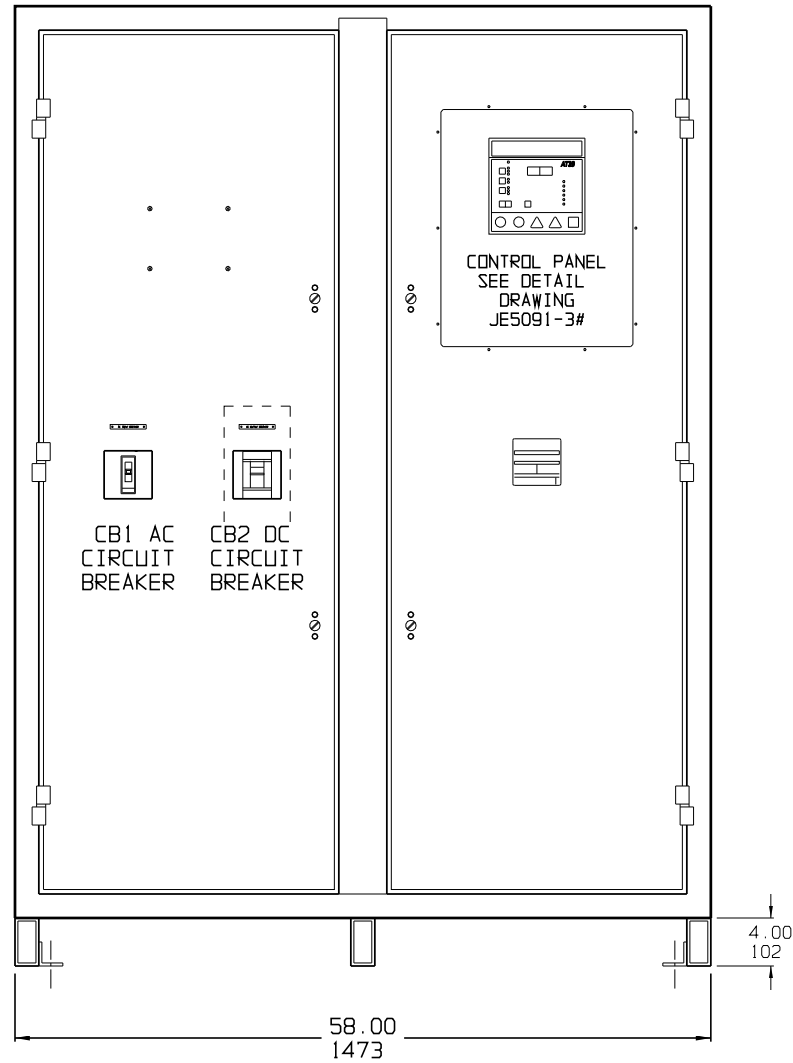
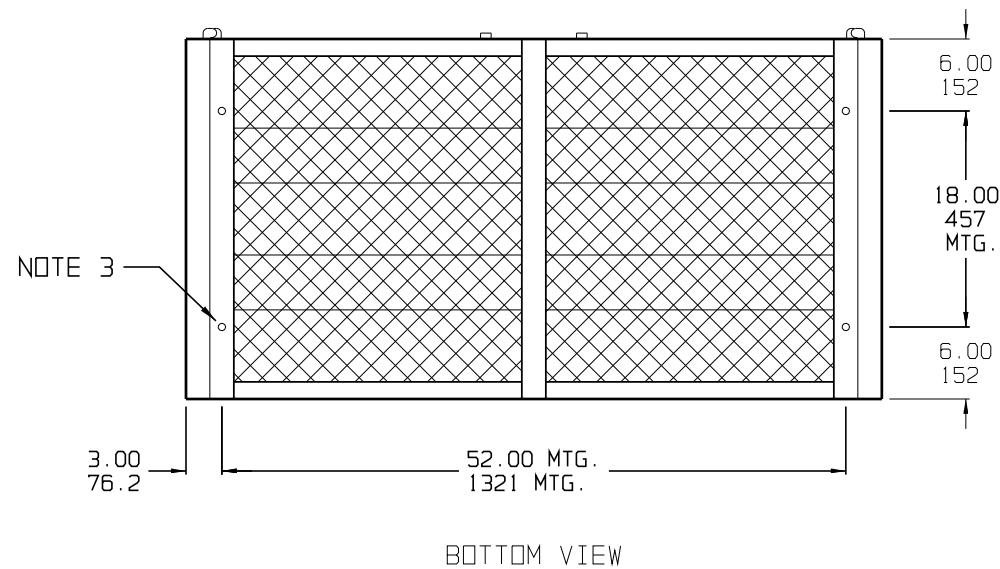
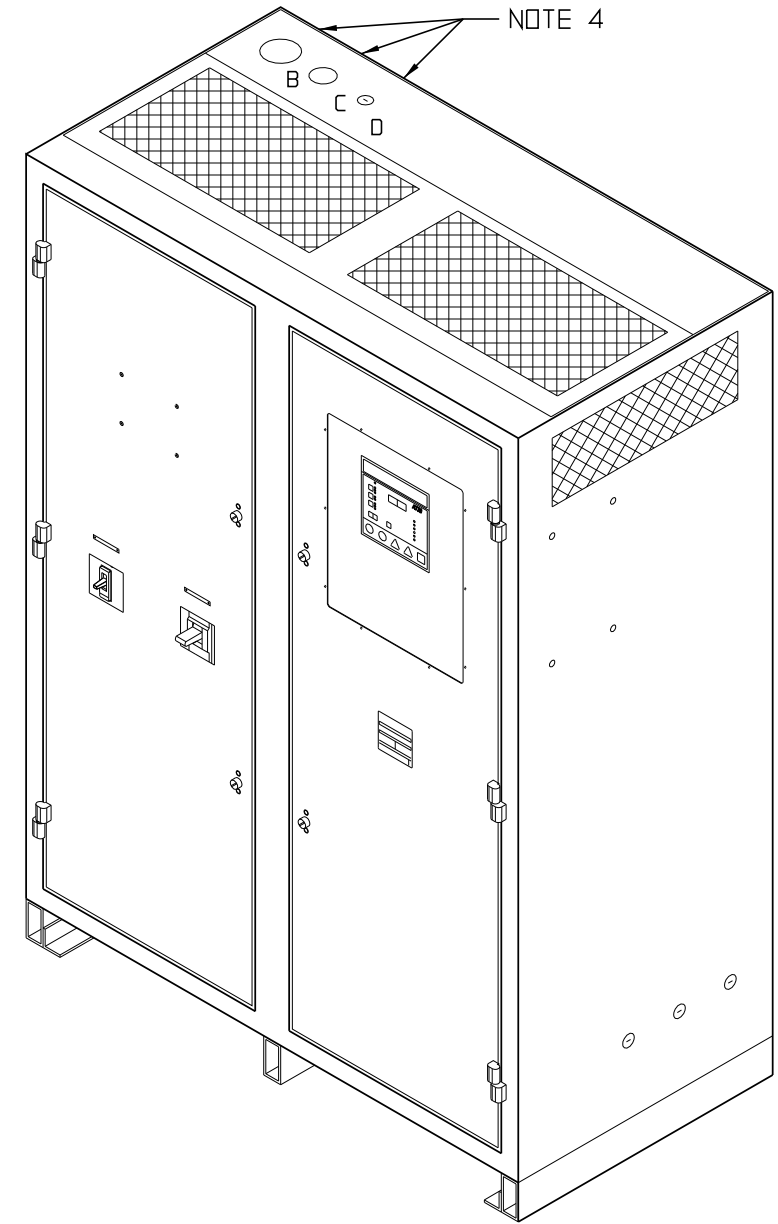
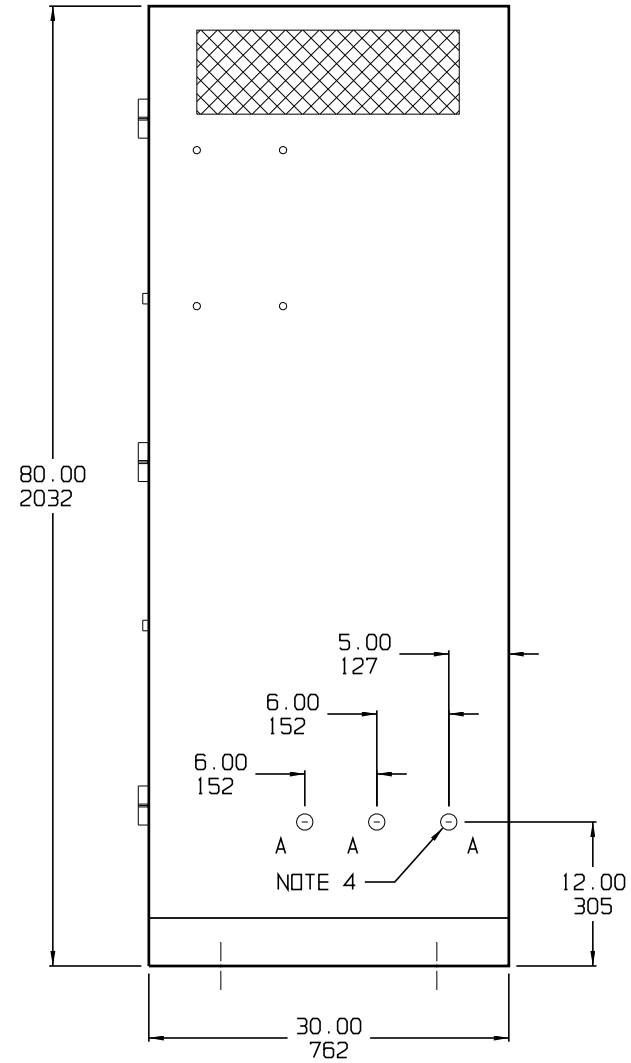


FRONT VIEW



RIGHT SIDE VIEW



NOTES:

- 1) ENCLOSURE IS A NEMA TYPE 1 / IP20 TOP-VENTED STEEL CABINET WITHOUT GASKETS. FINISH IS ANSI-61 GRAY EPOXY POWDERCOAT.
- 2) ALLOW 6in / 152mm OF FREE AIR ON ALL VENTED SURFACES (TOP, SIDES & REAR) FOR COOLING.
- 3) FOUR (4) 0.625in / 16mm FLOOR-MOUNTING HOLES ARE PROVIDED ON BOTTOM OF ENCLOSURE AS SHOWN.
- 4) NINE (9) STANDARD PRE-FAB CONDUIT KNOCKOUTS ARE PROVIDED AS SHOWN FOR CABLE ENTRY. BOTTOM CONDUIT ENTRY IS POSSIBLE THROUGH EXPANDED METAL UNDERSIDE. IF ADDITIONAL CONDUIT ENTRANCES ARE REQUIRED, ENCLOSURE SHOULD BE FIELD-MODIFIED BY INSTALLER.
- 5) BATTERY CHARGER SHIPPING WEIGHT: APPROXIMATELY 1600-4200 lb / 726-1905 kg (see Product Literature)

DUAL DIMENSIONS in mm

HOLE	DIA.	QTY.	APPLICATION
A	1.313 33.34	6	PRE-FAB CONDUIT KNOCKOUT FOR SML CABLE (BOTH SIDES)
B	3.500 88.90	1	PRE-FAB CONDUIT KNOCKOUT FOR LRG CABLE (TOP SIDE)
C	2.375 60.33	1	PRE-FAB CONDUIT KNOCKOUT FOR MED CABLE (TOP SIDE)
D	1.313 33.34	1	PRE-FAB CONDUIT KNOCKOUT FOR SML CABLE (TOP SIDE)

			THIRD ANGLE PROJECTION					
			DRAWN BY MCR 082709	TITLE AT30 BATTERY CHARGER OUTLINE: NEMA-1 STYLE-198 ENCLOSURE				
1	-N/A-	082221	ELECTRONIC APPROVAL SIGNATURES MAINTAINED BY MFG ECN LOG		DRAWING No JE5096-00		REV 1	B
0	21795	082709	UNLESS OTHERWISE NOTED DIMENSIONS ARE IN INCHES. TOLERANCES ARE:		SCALE NTS		PART No JE5096-00	SHEET 1 OF 1
REV	ECN No	DATE						