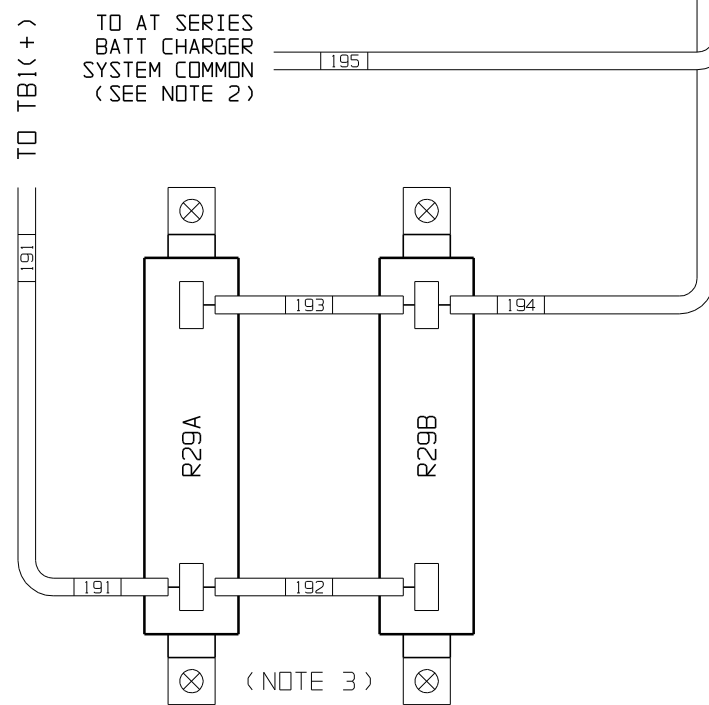
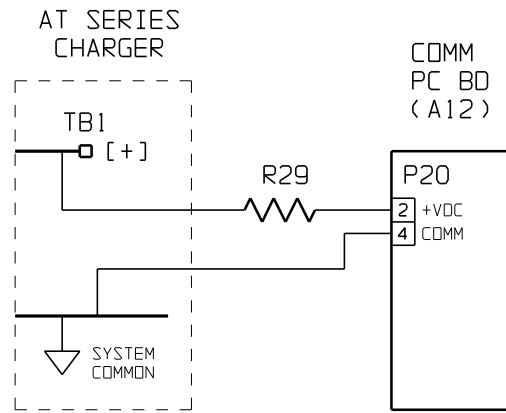
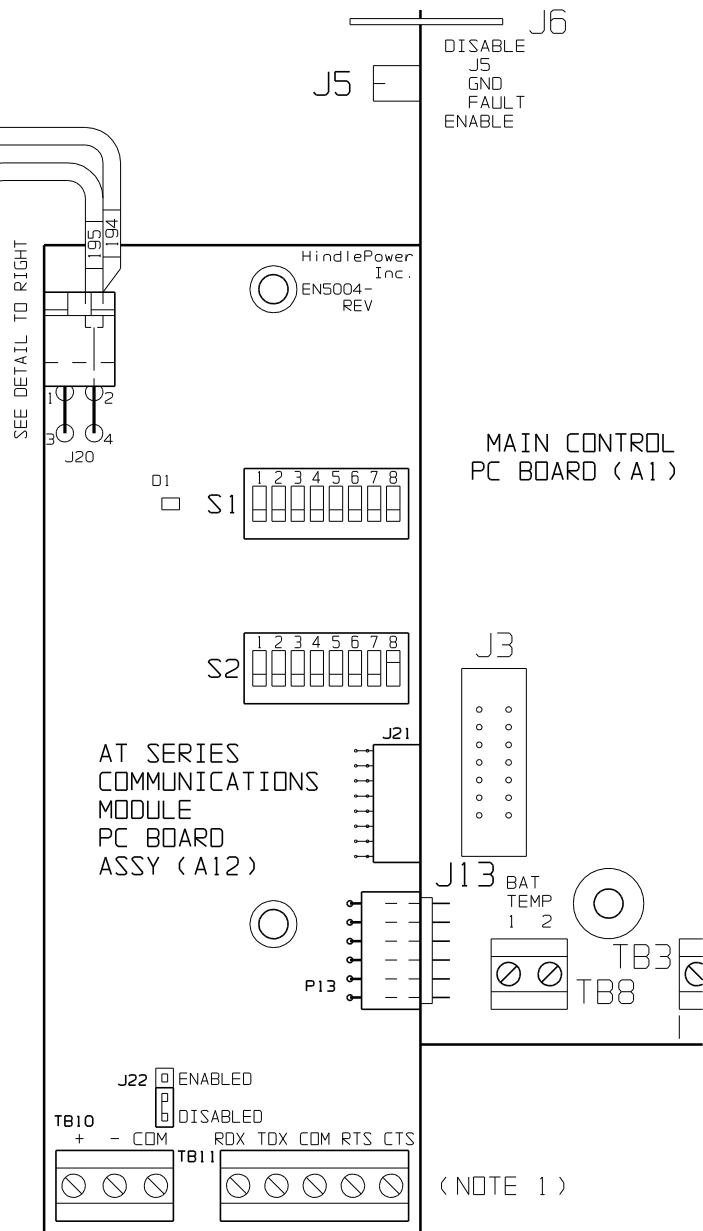


SYSTEM SCHEMATIC



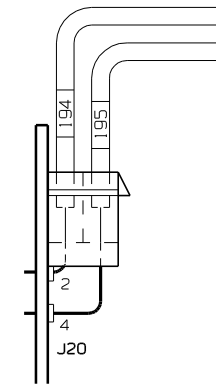
WIRING DIAGRAM

- NOTES:
- UNLESS OTHERWISE SPECIFIED, ALL USER TERMINAL BLOCKS (TB10/TB11) ARE SOLDERLESS COMPRESSION TERMINALS. CONTACT RATING IS 0.5A @ 125VAC/DC, ACCEPTING #22-14 AWG. WIRE.
 - WIRE #195 RUNS FROM A12-J20-4 TO AT SERIES CHARGER SYSTEM COMMON:
 AT10.1 G1: A3-E10
 AT10.1 G2: W2(-)
 AT30: R1-1(-)
 - BALLAST RESISTOR R29 CONSISTS OF TWO (2) RESISTORS CONNECTED IN PARALLEL FOR 130VDC UNITS. IN 48, 24 AND 12VDC UNITS, R29 CONSISTS OF ONE (1) RESISTOR AND WIRES #192 AND #193 ARE NOT USED.

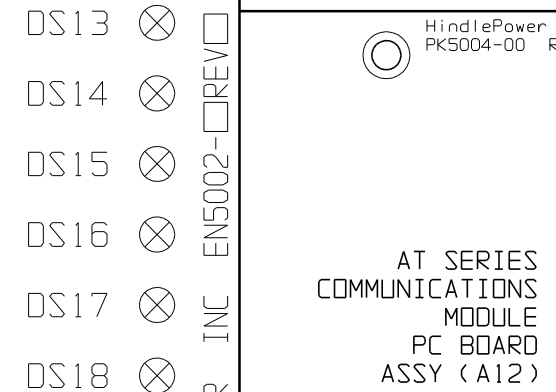


BACK VIEW
FACING CHARGER COMPONENTS
WHEN INSTALLED

SIDE VIEW
OF PC BOARD



- INDICATOR LIGHTS:
 D1 - STATUS LED
- JUMPERS:
 J20 - POWER SUPPLY CONNECTION
 J21 - FACTORY CONNECTION
 J22 - RS-485 TERMINATING RESISTOR (ENABLE/DISABLE)
- CONNECTORS:
 P13 - PLUG FOR MAIN CONTROL PCB (A1)
 J13 CONNECTION
- SWITCHES:
 S1 - CONFIGURATION SWITCHES
 S2 - MODBUS ADDRESS
- TERMINAL BLOCKS:
 TB10 - RS-485 USER CONNECTION
 TB11 - RS-232 USER CONNECTION



MAIN CONTROL
PC BOARD (A1)

FRONT VIEW
FACING CHARGER DOOR
WHEN INSTALLED

- NOTES:
- UNLESS OTHERWISE SPECIFIED, ALL USER TERMINAL BLOCKS (TB10/TB11) ARE SOLDERLESS COMPRESSION TERMINALS. CONTACT RATING IS 0.5A @ 125VAC/DC, ACCEPTING #22-14 AWG. WIRE.
 - WIRE #195 RUNS FROM A12-J20-4 TO AT SERIES CHARGER SYSTEM COMMON:
 AT10.1 G1: A3-E10
 AT10.1 G2: W2(-)
 AT30: R1-1(-)
 - BALLAST RESISTOR R29 CONSISTS OF TWO (2) RESISTORS CONNECTED IN PARALLEL FOR 130VDC UNITS. IN 48, 24 AND 12VDC UNITS, R29 CONSISTS OF ONE (1) RESISTOR AND WIRES #192 AND #193 ARE NOT USED.

| | | | | | | | | |
|-----|--------|--------|-----|--|-----|---------|------------|--|
| | | | | THIRD ANGLE PROJECTION | | | | |
| | | | | DRAWN BY | MCR | 051705 | TITLE | AT SERIES BATT CHGR COMMUNICATIONS MODULE PC BOARD ASSEMBLY DETAIL |
| | | | | APPROVED | TWH | 060805 | DRAWING No | JE5107-00 |
| 1 | E2092 | 070805 | | UNLESS OTHERWISE NOTED DIMENSIONS ARE IN INCHES. TOLERANCES ARE: | | REV | 1 | B |
| 0 | E2044 | 051705 | TWH | SCALE | NTS | PART No | JE5107-00 | SHEET 1 OF 1 |
| REV | ECN No | DATE | APP | | | | | |