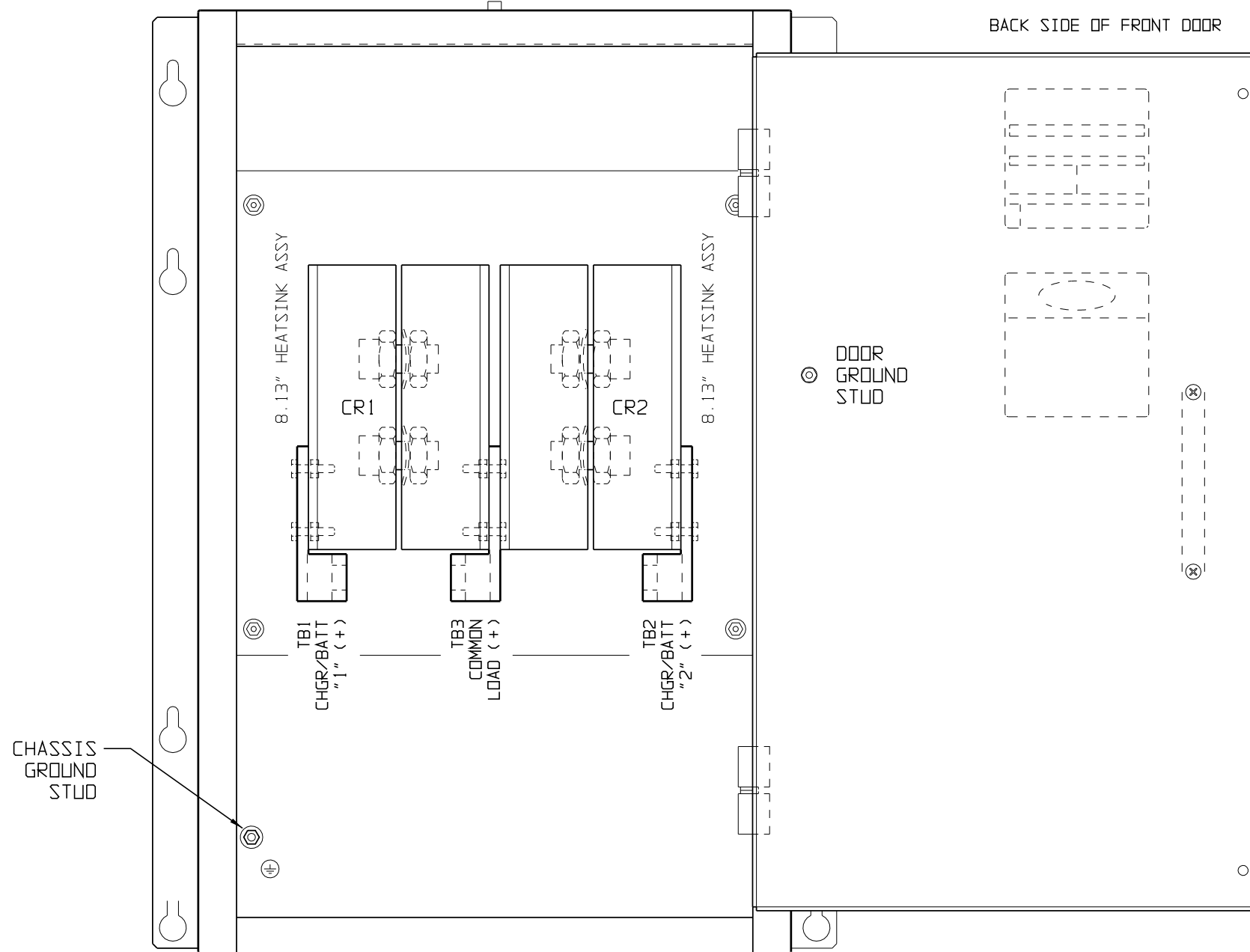


PART No.	VOLTAGE RATING	CURRENT RATING
EJ5144-03	250 VDC	500 ADC
EJ5144-07	600 VDC	500 ADC

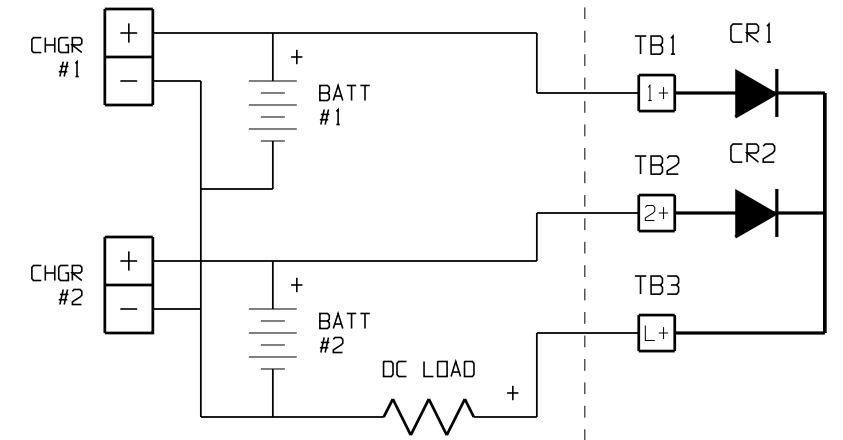
FRONT VIEW

BACK SIDE OF FRONT DOOR



SYSTEM SCHEMATIC

BEST BATTERY SELECTOR



NOTES:

- * STEERING DIODES LINK TWO (2) BATTERY CHARGER DC OUTPUT BUSES TO COMMON LOAD WITHOUT LINKING BATTERY BANKS TOGETHER, SEE OPERATING INSTRUCTIONS (JA5065-00)
- * STEERING DIODES AND I/O TERMINAL (TB#) ARE CONNECTED WITH FLAME-RETARDANT BLACK SWITCHBOARD INSULATION SYSTEM (SIS) TYPE WIRING, IDENTIFIED ON EACH END WITH NUMBER-CODED MARKERS

I/O TERMINAL	DESCRIPTION - TYPE	CONNECTION
TB1	CHGR/BATT #1 INPUT TERMINAL - CU-AL COMPRESSION LUG	TWO (2) #6 AWG-350 MCM
TB2	CHGR/BATT #2 INPUT TERMINAL - CU-AL COMPRESSION LUG	TWO (2) #6 AWG-350 MCM
TB3	COMMON LOAD OUTPUT TERMINAL - CU-AL COMPRESSION LUG	TWO (2) #6 AWG-350 MCM
CHS GND	CHASSIS GROUND - 10-32 ZPS STUD TERMINAL	#10 RING LUG

REV	ECN No	DATE	THIRD ANGLE PROJECTION	TITLE	DRAWING No	REV	SCALE	PART No	SHEET	OF
1	27443	021720		BEST BATTERY SELECTOR INTERNAL COMPONENT LAYOUT: STYLE-5017 ENCLOSURE (500Adc)	JE5139-03	1	NTS	JE5139-03	1	1
0	23733	052813	DRAWN BY MCR 082106							
B	N/A	110410	ELECTRONIC APPROVAL SIGNATURES MAINTAINED BY MFG ECN LOG							
A	N/A	101210	UNLESS OTHERWISE NOTED DIMENSIONS ARE IN INCHES. TOLERANCES ARE:							